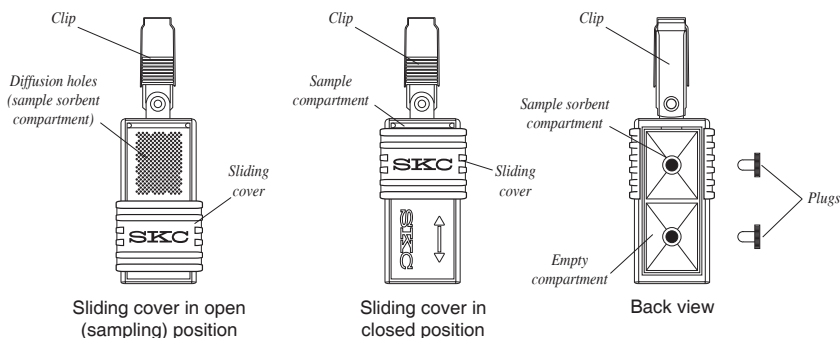




## Operating Instructions

863 Valley View Road, Eighty Four, PA 15330 USA  
Tel: 724-941-9701 Fax: 724-941-1369 e-mail: skctech@skcinc.com

### ULTRA Passive Samplers without Blank Cat. Nos. 690-101-NB, -103-NB, and -104-NB



### Applications

SKC patented\* ULTRA® Passive Samplers provide for low ppb to ppt detection of organic vapors in ambient and indoor air.

### Performance Profile

**Sampling Rates:** Go to the SKC Passive (Diffusive) Sampling Guide at [www.skcinc.com/catalog/passive-guide.php](http://www.skcinc.com/catalog/passive-guide.php).

**Analysis:** Thermal desorption (TD); gas chromatography (GC)  
See *Analysis Instructions* at [www.skcinc.com/instructions/40125.pdf](http://www.skcinc.com/instructions/40125.pdf).

**Shelf-life:** 30 days from date of manufacture. Store at  $\leq 39.2$  F (4 C).

\* U.S. Patent No. 6,607,581

## Sampling

1. Open the pouch. Remove the sampler.
  - a. Do not discard the pouch.
  - b. Store the pouch in a clean, organic solvent-free environment.
2. Record the following:
  - a. **Sample ID** on the pouch and sampler ID label
  - b. **Sampling location** on the pouch
  - c. **Date sample taken** on the pouch

❗ **Do not use Sharpie® markers or equivalent to mark the label or pouch as these can off-gas VOCs.**

3. Clip the sampler(s) in an appropriate location.
  - a. **Indoors:** Clip the sampler(s) to a stand accessory (Cat. No. 690-302) and locate at an appropriate height.
  - b. **Outdoors:** Clip the sampler(s) inside the shelter (open on two ends and bottom to allow air to flow freely). Hang the shelter securely at the appropriate height.

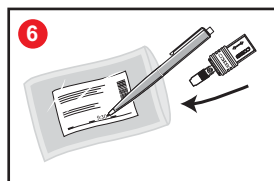
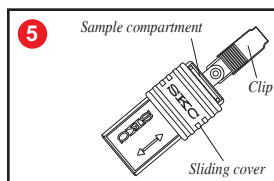
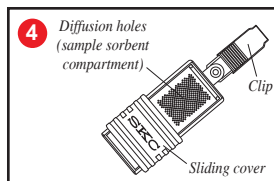
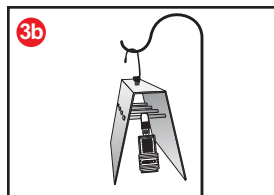
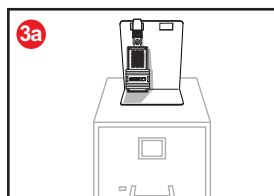
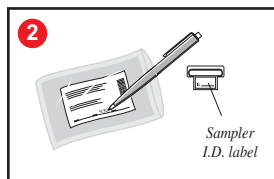
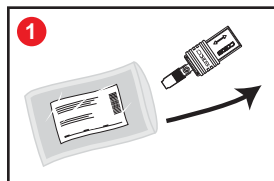
❗ **Ensure the diffusion holes in the sampler are not obstructed in any way.**

4. Start sampling: Slide the sampler cover to the open position (diffusion holes visible).
  - a. If performing for an extended sampling time or sampling in an area of high concentrations, install the Rate Reducer accessory (Cat. No. 690-300); see *Operating Instructions 39008*.
  - b. Write the sample start time on the pouch label.

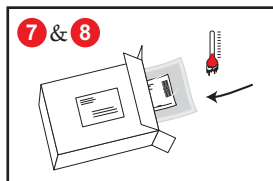
5. Stop sampling: Slide the sampler cover to the closed position (arrow and SKC visible).
  - a. Remove the Rate Reducer, if used, and then slide the cover to the closed position; see *Operating Instructions 39008*.
  - b. Write the sample stop time on the pouch label.

6. Place the sampler in its resealable pouch **immediately** after sampling.

❗ **Ensure the sample ID on the sampler matches the sample ID on the pouch.**



7. Seal the pouch(es). Place the pouch(es) in a container with a cool pack.
8. Use expedited shipping to ship the sample(s) and Chain of Custody form(s) to a laboratory for analysis.



## Storage

**Before Sampling:** Up to 30 days at  $\leq 39.2$  F (4 C) in a clean, organic solvent-free environment

**After Sampling:** 21 days at  $\leq 39.2$  F (4 C) in a clean, organic solvent-free environment

## Ordering

ULTRA Passive Samplers, pk/5, prefilled with:	Cat. No.
<b>Anasorb® GCB1</b> , <sup>#</sup> 370 mg	<b>690-101-NB</b>
<b>Chromosorb® 106</b> , <sup>#¥</sup> 285 mg	<b>690-103-NB</b>
<b>Tenax® TA</b> , <sup>#</sup> 253 mg	<b>690-104-NB</b>

<sup>#</sup> Limited shelf-life; see Storage above

<sup>‡</sup> Comparable to Carbopack B

<sup>¥</sup> Go to [www.osha.gov](http://www.osha.gov) and search on ULTRA for additional information on sampling rates for Chromosorb 106.

### Sampling Accessories

<b>Stand for Indoor Sampling</b>	<b>690-302</b>
<b>Rate Reducer</b> , 12 holes, lowers sampling rate for extended sampling time and for high concentrations	<b>690-300</b>
<b>Shelter for Outdoor Sampling</b>	<b>690-303</b>

### Analysis Accessory

<b>Thermal Desorption Tube</b> , Perkin Elmer, 0.25-inch OD x 3.5-inch length, includes screens and end caps, ea	<b>P226530</b>
--	----------------

## SKC Limited Warranty and Return Policy

SKC products are subject to the SKC Limited Warranty and Return Policy, which provides SKC's sole liability and the buyer's exclusive remedy. To view the complete SKC Limited Warranty and Return Policy, go to <http://www.skinc.com/warranty.asp>.

